



12/24

SMOOTH OPERATOR

The updated
VanDutch 75 shows
off the well-conceived
evolution of a popular
model. *Julia Zaltzman*
steps on board

Photography: Gianluca Napthalina Camporesi

There's something disarmingly satisfying about stepping barefoot onto the wholly uncluttered foredeck of the VanDutch 75. The smooth-grain finish of natural teak stretches to the very edges of this pocket-sized boat. It comes to a sharp point at the bow with three square skylights sitting flush in a line down the middle, but with no steel trim or lipped surround to denote an edge or threshold. It's an infinity deck with a sculptural simplicity that is both pleasing and precarious. And an essential element of Cantiere del Pardo's new flagship model since acquiring the VanDutch brand in 2020.

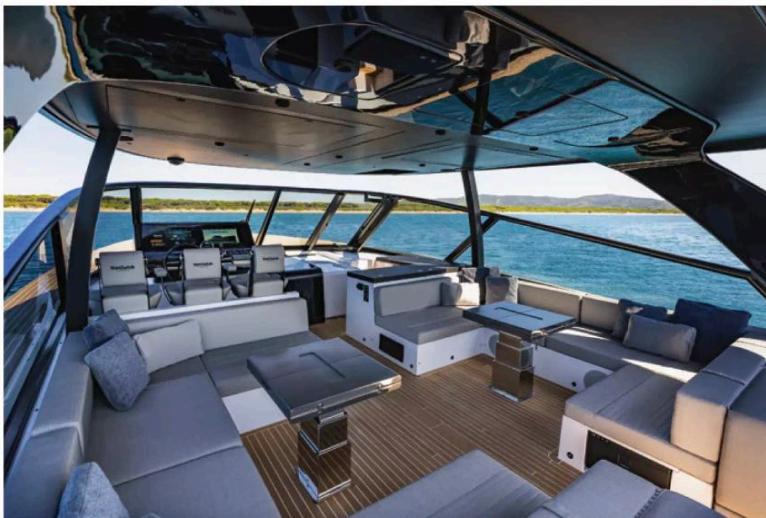
Of course, VanDutch has long been renowned for its defining principle of visually simple yet sophisticated design. The original fleet of sport cruisers, penned by Frank Mulder, made streamlined silhouettes their identifiable graphic moniker, with clean lines and an elongated bow. The original VanDutch 75, which launched in 2014, sold 11 hulls before the first had even entered production. "It's the most classical and iconic line

"Comfort and style are what define this design, with many places to sit, relax and enjoy the boat, even while cruising"

you can imagine for an open boat," says Cantiere del Pardo's marketing manager, Fabio Lazzari.

Cantiere del Pardo's new evolutionary VanDutch 75 stays stylistically true to its Dutch heritage, including Mulder Design's original naval architecture, yet under the new direction of BurdissoCapponi Yachts & Design, a little Mediterranean flair has bubbled to the surface. The studio's two-year design development is apparent in the smallest of details, from the 400mm stainless-steel cleats to the return to smooth grain, sustainably sourced natural teak as a standard deck finish, with Esthec offered as an option. It's one of many attributes that form part of the brand's conscious revisit to "aesthetic features", according to Lazzari, who points out the new use of brilliant white caulking for a contemporary pinstripe effect, and the highly technical "invisible anchor".

The anchor is deployed unseen from the outside and accessed by the crew under a discreet hatch in the foredeck. "You can't see anything from the exterior of the boat, it all happens inside the hull and underwater, with two joysticks for precision control," says Francesca Burdisso, co-founder of BurdissoCapponi Yachts & Design. An integrated door in the windshield – itself a clean sweep of tinted glass – allows easy access from the cockpit to the bow. "VanDutch already had a trademark for clean exterior design, and this system is one of the



VANDUTCH 75

LOA 22.18m

BEAM 6.8m

DRAUGHT 1.77m

DISPLACEMENT 45.2t

ENGINES 3 x Volvo D13 IPS 1050

(or 3 x Volvo IPS 1350)

FUEL CAPACITY 4,000L

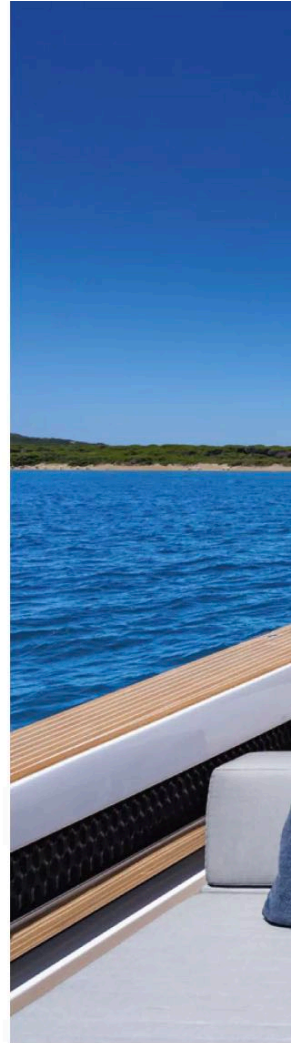
FRESHWATER CAPACITY 1,000L

PRICE from €3,960,000 (ex VAT)



Triple Volvo Penta IPS drives push the VanDutch 75 to 40 knots with a cruising speed just a touch below that





most complex solutions that we've introduced to preserve that," adds Burdisso.

Other exterior innovations include a carbon-fibre hardtop that protects the lounge area without adding height to the low-slung profile. Meanwhile, the layout of the 45-square-metre cockpit has been reconfigured to fit a pair of convertible tables and two large opposing sofas in custom upholstery inspired by vintage sports cars. Digging deep into the dayboat experience is a Fenix galley top, with a barbecue, fridge, ice maker and dual hobs.

"Comfort and style are what define this design with many spaces to sit, relax and enjoy the boat, even while cruising," says Lazzari. It's further enhanced with an up-and-down swim platform and a tender garage with an integrated launch and recovery system - two elements that don't always appear on a dayboat.

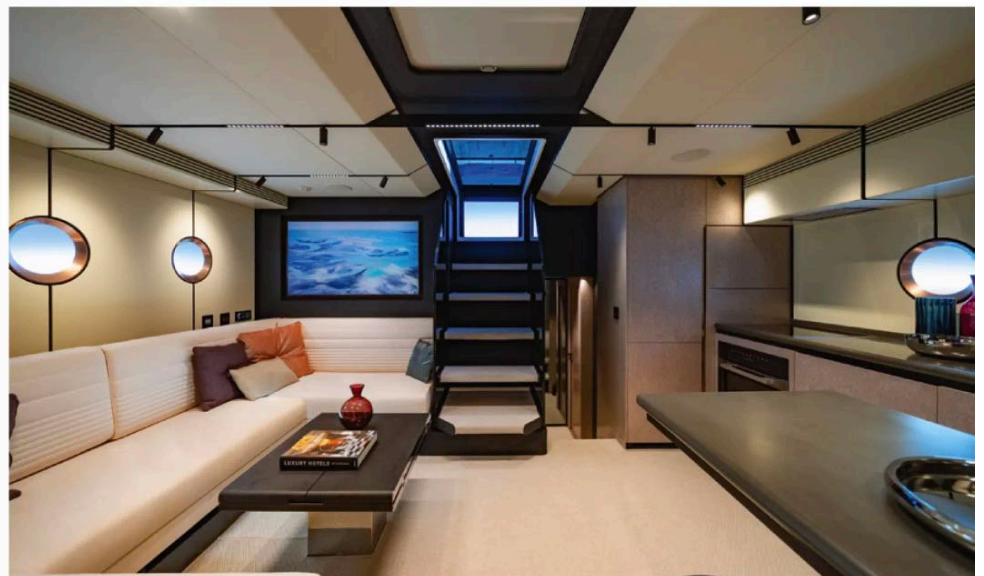
Inside, the design studio introduced what Cantiere del Pardo describes as a "softer visual language, while preserving the clean lines that define the VanDutch aesthetic". On hull No 1, which is dressed in the "Cool" concept, this means pearl burr veneers, matt slate black wood accents, beige suede upholstery and moon-toned Econyl flooring. Owners can also choose a "Smooth" concept with warmer tones and rich mahogany.

"This choice of interior reinforces the boat's customisable nature, allowing owners to create a personal onboard atmosphere," notes Lazzari.

According to Burdisso the most important element of the interior is the warm glow of six porthole lamps that give the effect of afternoon sun streaming through a window where there is none. "There aren't any hull openings in the design, so we decided to have a decorative lamp that is reminiscent of looking out to sea," she says.

Brushed copper serves as a metal accent to bring a "Mediterranean warmth" to the classic black and white colour palette that is traditional of VanDutch. "We retained the monochrome aesthetic but modernised it with the use of briar

Above: part of VanDutch's clean aesthetic is a hull with no openings, so what look like portholes down below (bottom) are actually lamps that mimic warm sunlight





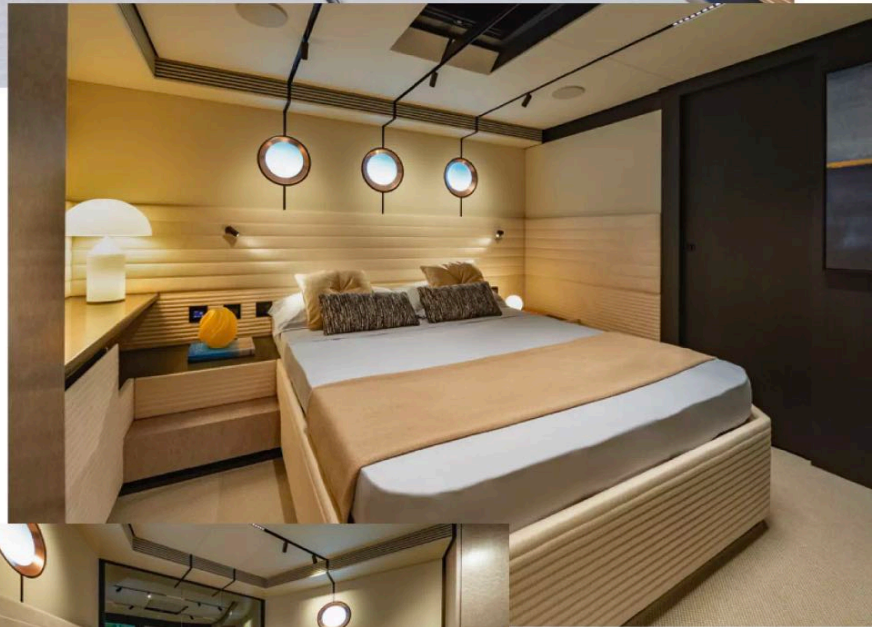
“We didn’t want to touch the elegance of its clean line exterior because in simplicity there is perfection”

wood and suede,” says Burdisso. Custom-designed track lighting in the full-beam main saloon allows owners to tailor the lighting scheme to their preference. It adds a striking visual effect that is complemented by horizontal lacquered slat ceiling panels that subtly conceal the air con system. The open-plan lounge also includes a dinette with an American-style galley and convertible table.

The VanDutch 75 has three cabins, including the aft owner’s suite to starboard and a twin guest cabin to port, both with en suite, while the forward VIP cabin has a dual-access bathroom that also serves as a dayhead. All cabins enjoy bathroom fittings by ELKA Design, and faux skylights lamps mimic the main saloon “portholes”.

Driving all this softly presented design is a powerful triple Volvo Penta IPS propulsion package capable of pushing the yacht up to 40 knots, with a cruising speed of 37 knots.

“We wanted to develop an evolution of the VanDutch 75 since acquiring the brand,” says Lazzari. “We didn’t want to touch the elegance of its clean line exterior because in simplicity there is perfection, but from the technical, interior design and performance side, we’ve entered a new era.” ■



The 75’s accommodation includes a forward VIP (left) and the owner’s cabin (above), plus a twin guest cabin. Top: a 45m² cockpit offers ample seating in and out of the sun